

Twickenham & Richmond TRIBUNE

Contents

- TickerTape
- COVID-19
- The servant problem
- The leaves of brown
- River Crane Sanctuary
- A New Film of Fontainebleau
- Church Street Loses a Good Friend
- Compassionate Binmen
- Precautionary advice regarding avian flu
- Twickers Foodie
- Review
- Traveller's Tales
- WIZ Tales: Uganda - Ebola Outbreak
- Young Writers Festival 2022
- Coffee Beans Means Trees

Contributors

- Simon Fowler
- Kew Village Market
- Sammi Macqueen
- Richmond in Europe Association
- Bruce Lyons
- Deep Patel
- Sunborn Gibraltar
- Richmond Volunteer Service
- Alison Jee
- Mark Aspen
- Richmond Shakespeare Society
- Doug Goodman
- World InfoZone
- St Mary's University
- Arts Richmond
- Brentford FC
- RFU
- LBRuT

Editors

Berkley Driscoll
Teresa Read

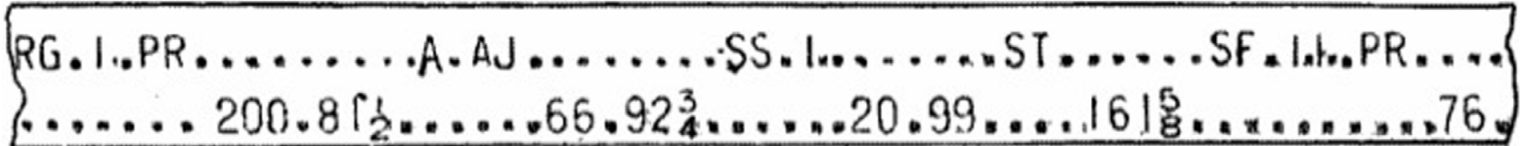


4th November 2022

T&RT

The Tribune returns to Twickenham from Gibraltar

Photo by Berkley Driscoll



TickerTape - News in Brief

Rail Strikes Called Off

Strike action by union members on 5, 7 and 9 November has been cancelled but unfortunately services will still be severely disrupted this weekend and early next week.

Twickenham Christmas Lights

Date for your diary - Sunday 20th November the official Twickenham Christmas Lights Switch on Event outside Barclays Bank.

Rugby at Twickenham Stadium – Sunday 6th November

ENGLAND v ARGENTINA

Sunday 6th November, KO 14:15.

Exp. attendance 82,000

Full CPZ in operation 10:00-22:00.

Shuttle buses from Richmond & Hounslow East.

London, Rugby & Whitton Roads expected to close 12:15 - 14:15 and 15:30 - 18:00.

ETNA Centre job vacancy

Are you looking for a new role? Do you want to work for a local organisation? The ETNA Centre is looking for a Facilities Coordinator!

Find out more about the role [HERE](#)

If that is you, please send a CV and CL to info@etnacentre.org

Closing date Monday 7 November

Royal Parks wants photographers

Calling all professional photographers. You capture some wonderful images of the Royal Parks in all seasons and now we're looking for your assistance with future projects.

If you think you can help, then please email digitalcomms@royalparks.org.uk.

skyelectrical

Replacing your halogen recessed lights with LEDs will:

- ✓ SAVE ENERGY
- ✓ SAVE YOU MONEY
- ✓ PROVIDE BETTER LIGHTING

So...

- ✓ CALL US TODAY FOR A FREE HOME ASSESSMENT AND QUOTE

For a timed appointment please call Sky Electrical on 020 8894 1799

22 Fifth Cross Road, Twickenham, Middlesex, TW2 5LF

www.skyelectrical.co.uk



020 8894 1799

info@skyelectrical.co.uk

COVID-19

Teresa Read

Weekly epidemiological update on COVID-19 - 2 November 2022

At the regional level, the number of newly reported weekly cases decreased or remained stable across four of the six WHO regions: the African Region (-39%), the European Region (-34%), the Eastern Mediterranean Region (-8%) and the South-East Asia Region (-3%); while case numbers increased in the Region of the Americas (+5%) and the Western Pacific Region (+5%). The number of new weekly deaths decreased across two regions: the European Region (-31%) and the Eastern Mediterranean Region (-15%); while the number of deaths increased in the African Region (56 versus 17; +155%), the Region of the Americas (+23%), the South-East Asia Region (+13%) and the Western Pacific Region (+7%).

At the country level, the highest numbers of new weekly cases were reported from Germany (346,672 new cases; -36%), Japan (281,974 new cases; +21%), the United States of America (259,066 new cases; +1%), China (257,994 new cases; -10%) and the Republic of Korea (241,465 new cases; +37%). The highest numbers of new weekly deaths were reported from the United States of America (3,187 new deaths; +24%), the Russian Federation (567 new deaths; -11%), Italy (559 new deaths; -5%), Brazil (553 new deaths; +44%) and China (489 new deaths; +4%).

European Region

The European Region reported over one million new cases, a 34% decrease compared to the previous week. Three (5%) countries reported increases in new cases of 20% or greater, with the highest proportional increases observed in Uzbekistan (139 vs 78 new cases; +78%), Albania (175 vs 135 new cases; +30%) and Israel (5,510 vs 4,605 new cases; 20%). The highest numbers of new cases were reported from Germany (346,672 new cases; 416.8 new cases per 100,000; -36%), Italy (208,501 new cases; 349.6 new cases per 100,000; -18%) and France (202,020 new cases; 310.6 new cases per 100,000; -42%).

Over 3,200 new weekly deaths were reported in the region, a 31% decrease as compared to the previous week. The highest numbers of new deaths were reported from the Russian Federation (567 new deaths; <1 new death per 100,000; -11%), Italy (559 new deaths; <1 new death per 100,000; -5%) and France (462 new deaths; <1 new death per 100,000; -10%).

COVID IN THE NEWS THIS WEEK

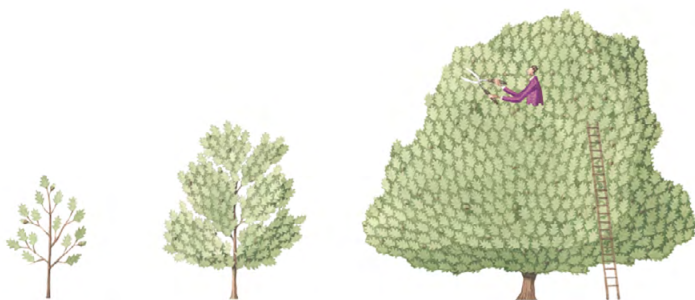
NBC News: Pfizer says omicron booster generates stronger immune response than original vaccine

France24: UK researchers cure man who had Covid for 411 days

abc.net.au: Australians warned of 'another COVID wave' as sub-variants take hold

Aljazeera: China's stock markets jump on hopes for end to 'zero COVID'

SKY News: Shanghai Disney Resort visitors told to stay at home after single COVID case prompts lockdown of theme park



The Tree Agency

darryl parkin

The Treehouse
25 King Edwards Grove
Teddington, Middlesex TW11 9LY
Telephone 020 8274 0107
Mobile 07960 123580
Fax 020 8274 0119
info@thetreeagency.co.uk
www.thetreeagency.co.uk



The Tree Agency

The servant problem

By Simon Fowler

Until the First World War virtually every household in Richmond and Twickenham employed servants to do the cooking, cleaning and a variety of other tasks. Even relatively modest households would have had a 'skivvy' to help the mistress. Despite what 'Downton Abbey' and 'Upstairs Downstairs' might show, the life of a female servant was often miserable. Housemaids and cooks were poorly paid and often dreadfully treated by their employers.

It is hard to discover very much about individual servants. Perhaps typical was Emily Chalfont who in 1881, was a parlour maid, aged 14, in the household of a former Naval captain Henry Temple, who lived at the bottom of Kew Road in Richmond.

Like many servants locally Elizabeth grew up in the country. She was the daughter of George Chalfont, a farm labourer, who in 1871 had four young children under eight. Elizabeth no doubt was sent out to service as soon as she was able in order to support the family.

It is possible that she got the position with the Temples through Martha Chalfont, another servant who was staying on census night in 1881. As Martha was eight years older than Elizabeth, she was probably an older sister.

Elizabeth's employer was Henry Temple a former Royal Naval officer, who lived with his wife and daughters. A naval captain on half-pay with a family was not a wealthy individual. Miss Chalfont may well have been the only servant. One can imagine the panic that Elizabeth must have felt every day. The fact that she was allowed a family member as a visitor, however, suggests that her employer may have been more generous than normal.

By the time of the next census Elizabeth had married and was living near Maidenhead. She was lucky that she had had no dealings with the Metropolitan Association for Befriending Young Servants (MABYS). The charity attempted to provide help for young girls, keeping them away from the many temptations offered in London. Over the years several training schools for servants were established locally. The most successful of which was Princess Mary Adelaide Training School, which was in existence between 1886 and about 1918 on Richmond Green. It doesn't seem to have been a particularly happy place. To start with, the building was burnt down in 1893 by one of the residents, something which oddly is not mentioned in the annual report for that year. We know a little about one of the residents, a young lady, aged fifteen, referred to as IB. She arrived there on 6 May 1902 'very shortly expecting her confinement. Isabel said that one of her foster mother's sons was the father of her child'. The father was also aged fifteen. She was summarily returned to the workhouse at West Ham to give birth.



The leaves of brown...

... are tumbling down, gold and red too in the lovely autumn light, so fingers crossed for sunshine for Sunday's market. The V of village streets will be lined with around **50 stalls** of the finest foods and crafts – all farmed, grown or made by our stallholders themselves (see [here](#) for the complete list).

If it's beginning to look a *bit* like Christmas, the craft stalls could get you happily started on your presents list with perfect original gifts with the personal touch. How about gorgeous gemstone and gold jewellery from **Atelier Chokerbali** (as in Penelope Grant's sketch here)? Or the nicest Norwegian knits to keep little ones snug from **Handmade by Hilde**? A beautiful bespoke leather belt to order from **Sam Brown London**?



Also at **KVM's own stall** we'll be selling Caroline Blomfield's Christmas cards of Kew scenes, we've brand new stock of our capacious yet chic canvas tote bag and the best bargain ever, the KVM CD of our favourite bands for just £1 – stocking fillers and tree presents sorted!

And for our sounds this Sunday? The two acts starring in our sunshine-yellow music marquee couldn't be more different: first a right old cockney knees-up from **Baz & Dave** followed by the classiest arias from **Airs & Graces**, featuring divine diva Catherine Hastings. Something for everyone, that's Kew Village Market...

**Looking forward to seeing you on Sunday 6th November
from 10am to 2pm**

PS Be sure not to miss next month's market, on Sunday 4th December – it's our Christmas Special, with even more hand-made gifts from local craftspeople as well as a feast of foodie goodies.

Please note that there will be no market in January.

www.kewvillagemarket.org

KEW VILLAGE MARKET
A decorative flourish is positioned below the text.



Walk for Wildlife is scheduled for: Saturday 26th November 2022 in London and other areas. (See video [HERE](#)) Perhaps you will join us this time for a wonderful family friendly walk with likeminded and engaged people who love Nature. We went in 2018 and it rained but that did not dampen spirits at all. Bird song was played as we walked from Hyde Park to Parliament to deliver our petition and there was no trouble and lots of laughter, music and friendships formed.

Seven Steps to save Nature by 2030 Click this [link](#) to read The RSPB's Steps which they encourage us to engage with for Nature's conservation efforts. One of the steps is "People Power Yep – that's you! Together, we can be drivers of change. But we need our Governments to support and empower us to act for nature, and build and protect green spaces that help us to connect with the natural world. Greens are good for you!" c. RSPB

Amol Rajan interview with Greta Thunberg is on [iPlayer](#) now and if you missed it live then do catch up as it may give you pause for thought and even challenge pre-conceptions of this eco warrior.



River Thames



Pen Ponds

Water quality and Avian Flu are big topics which grab the public interest particularly if we live by a waterway or have Greenspaces with migrating birds intermingling with domesticated birds such as poultry. There is a need for individual responsibility from smaller keepers as the Agencies will look at larger business owners but not necessarily these smaller hen coops due to lack of funds and investigators to do so. Along The River Crane Walk there are such domesticated birds and we hope there will be good stewardship to avoid contamination and devastation from this awful virus which can transmit so easily and maybe even drift into the human chain. Website: [River Crane Sanctuary](#) [Instagram](#)

A New Film of Fontainebleau

A new short film highlighting some of the delights of Fontainebleau has just been released. Please click on the following link to see it.

New Film of Fontainebleau can be viewed [HERE](#)

Fontainebleau has also just concluded a new twinning partnership with Alba Iulia in Romania. Our French partner is also twinned with Sintra, in Portugal, Lodi in Italy, Konstanz in Germany & Siem Reap in Cambodia.



The Richmond in Europe Association

Promoting sporting, cultural and educational links across Europe

Church Street Loses a Good Friend

By Bruce Lyons

Sadly, I must tell you that Chris Tiernan passed away this week, after a short illness. I came to know Chris when he and I worked on the Steering Committee that was formed to support the establishment of a BID (Business Improvement District) in Twickenham. Always a stickler for correctness he resigned from the committee over their reluctance to take advice on "Governance" a subject close to his heart, but it was voted in anyway.

Generous to a fault it was he, whose efforts succeeded in getting the overhead lights that one sees twinkling on a dark Autumn night, and when it was installed plugged them into his building so giving the street free power these many years. More than that, till this Summer he was forever up the ladder adjusting the time switch so the lights co-ordinated with seasonal events. I will think of Chris whenever I walk up the street – and the lights are on!

Chris Tiernan was born 21st January 1949 and died 2nd November 2022. He studied Physics at Imperial London and spent 16 years working for IBM before becoming the Sales Director of a subsidiary of a Swedish bank. Chris started Grosvenor Consultancy Services in 1989, a management consultancy, moving to Church Street, Twickenham in 1997. He leaves behind his beloved wife Annie, daughter Katie, son Will and grandchildren Evie, Joe and Aliina.

Chris will be greatly missed but not forgotten by my family & I and many others.



Could the bin men of Twickenham now be the most compassionate bin men on the planet...?

By Deep Patel

I am always writing about kindness to the little lives around us that I had to write about this... Last week on bin day I saw this note stuck to the side of a bin outside one of our neighbour's houses....it melted my heart...How a little girl could show so much care. As a result of her note, the refuse collection team in our road are now seen shaking the bin bags to shake off snails and slugs before putting them into their truck...a little girl has inspired them with her compassion so much so that they seem to be smiling more than ever now as they do their duties...one of the bin men told me that since reading the note and following the little girl's suggestion (see note in image below) his own life has got better and he now also believes in good karma from the littlest acts of kindness.

Most of Twickenham know I like sharing little tips on how to care for the little lives many call "pests" as they are also lives trying to live....like when walking home on a dark rainy night to use your mobile phone torch as you walk and pick up any slugs, snails and worms stranded on pavements using a leaf and move over a wall to stop them being mistakenly crushed, or to use kind live capture traps to catch mice and release in park lands or electronic deterrents rather than poison...and at this time of year, to avoid sweeping your gardens too close to the edges of the drive ways and patios as many tiny lives live there, similarly to gently lift pots in the garden if you are moving them rather than dragging them (to allow the many little lives under them to keep alive and happy) all for good karma....the little girl who made this poster (below) told me she made it after seeing one of my similar posters which if you are a Twickenham resident you may have seen prominently plastered all over my shop windows! I genuinely believe a little change can help promote a bigger change in ways we can never imagine...

Need more people like this little Twickenham girl in this world...a credit to her parents and someone we can all be proud of to have in our lovely neighbourhood.



Precautionary advice regarding avian flu

There are reports of a small number of wild birds that have been found dead in Richmond upon Thames with suspected avian flu. The UK Health Security Agency (UKHSA) has said that avian influenza is primarily a disease of birds and the risk to the general public's health is very low.

The Food Standards Agency has said that on the basis of the current scientific evidence, avian influenza poses a very low food safety risk for UK consumers. Properly cooked poultry and poultry products, including eggs, are safe to eat.

There are number of precautions people can take to avoid contact with a bird with avian influenza:

When walking along the riverside, keep to footpaths and keep dogs on leads

- Do not feed wild waterfowl (e.g. ducks, swans, geese)
- Do not pick up or touch dead or sick wild birds
- Do not touch wild bird feathers or surfaces contaminated with wild bird droppings
- Please report dead wild waterfowl (swans, geese, or ducks) or other dead wild birds, such as gulls or birds of prey to Defra's helpline on 03459 335577

If you keep poultry or other birds at your home or work, wash your hands and clean and disinfect your footwear before tending to your birds.



Rewilding Arcadia project update

Now that there is six months left of Phase One of the Rewilding Arcadia project, there's a chance to reflect on what's been achieved so far.

Thames Landscape Strategy are currently preparing for Phase Two by establishing the legacy of the project with lots of exciting events and consultations to come.

This is a community-led project which could not have come this far without community involvement and support. They will continue to engage and listen to the diverse voices of the local community throughout the project and beyond.

Some of Phase One's achievements include:

- Native riparian planting and diversification at the Kew meridians and Ham
- The establishment of 100m of spiling on the Kew Towpath and the Kew Meridians
- Several Rewilding Arcadia Roadshow pop-ups throughout Richmond
- Open House Festival Tour of the water conduits in Richmond Park
- Walks, talks and events with local community groups, including use of our very own 17th century replica camera obscura

Their dedicated team of volunteers are approaching the end of their year-long roles as Citizen Scientists. They've been using dip meters to take weekly measurements in a number of boreholes throughout Old Deer Park, which have been fed back to a Hydrologist who has mapped out the behaviour of the water as it enters the park.

The results from this vital work will form the basis of future land management within the park and how to work with the water instead of against it.

They'll be commissioning a similar hydrological survey for next year in Ham and Petersham and will be looking for volunteers to help with this exciting task. Your local riverside needs you!

Please join in and have fun whilst helping your local riverside at Kew. We will be undertaking vegetation management and a traditional technique called willow spiling to protect the towpath from erosion and enhance habitat. Everyone is welcome, no experience necessary!

Sessions will take place at Old Palace Lane from 10am to 2pm on the following dates:

- Wednesday 2 November
- Thursday 3 November
- Thursday 10 November
- Tuesday 15 November
- Thursday 17 November
- Wednesday 23 November
- Thursday 24 November
- Monday 28 November
- Thursday 1 December

Find out [more information about the project](#).



GIBRALTAR

sunborn

5 - STAR YACHT HOTEL
CASINO RESORT



SUPERYACHT GLAMOUR

ON NEW YEAR'S EVE



PACKAGE INCLUDES:

WELCOME AMENITIES | DAILY BREAKFAST BUFFET
1 X INFINITY SPA VOUCHER (£50)
2 X DETOX, 2 X HYDRA EARTH KISS ORGANIC FACE MASKS
NEW YEAR'S EVE PARTY PACKAGE FOR 2 (LOCATION NEEDS TO BE PRE BOOKED)
BUBBLY BREAKFAST BUFFET 1ST OF JANUARY

Book 30th December to 2nd January, 3 nights £770

For 2 guests in a Super Yacht Superior Room

Book 31st December to 1st January, 1 night £450

For 2 guests in a Super Yacht Superior Room

Terms & Conditions: Offer subject to availability

Package is subject to availability. Cannot be combined with other bookings. Reservations must be made direct via phone or email and cannot be made via third parties. Pre-payment is required and bookings cannot be cancelled or modified

TO BOOK CONTACT: +350 200 16900 | RESERVATIONS@SUNBORNGIBRALTAR.COM

RMT Strikes Called Off

The strikes planned for 5, 7 and 9 November have been called off by the RMT leadership, comment from Rail Delivery Group

A spokesperson for the Rail Delivery Group, said: "It is positive that the RMT leadership have stepped back from the brink and called off their strike action. Unfortunately, the late notice means that while train companies are working hard to reinstate services, they will remain severely disrupted for our passengers tomorrow and into the early part of next week. Our advice remains to please check before you travel and on Saturday and Monday, only travel by rail if necessary.



"We remain committed to intensive negotiations to agree the reforms needed to improve reliability, deliver a pay rise for our people and get the industry back on a sustainable financial footing."

Rail Delivery Group



Volunteers needed for Christmas Day!

Richmond Christmas Day Dinner is in search of volunteers to help provide care leavers with a Christmas they'll never forget.

This is now the 6th year of The Richmond Christmas Day Dinner organising a Christmas Day event for young people that have grown up in care, and they are asking for volunteers to help out for this year's dinner.

It is a wonderful event and a warm fuzzy feeling guaranteed!!

To volunteer as a host for the Christmas Day Dinner you will need to:

- Be over 25 years old
- Be available and commit to work from 10am to 6pm on Christmas Day
- Be available to attend a short interview on the weekend of 12 and 13 November
- Be available to attend a training day on 10 December



This role will be subject to a DBS check. Please email christmasdayrichmond@gmail.com if you would like to get involved!

RCVS Online Trustee Recruitment Event

Thursday 10 November 2022, 6.30pm - 8pm

Join us to hear from some amazing local community groups and about the difference you could make as a trustee



Register for your free place now
at www.richmondcvcs.org.uk



Richmond
Volunteer
Service

020 8843 7945

Registered charity number 1075259

Richmond
CVS 
empower - enable - involve

Follow



@RichmondCVS

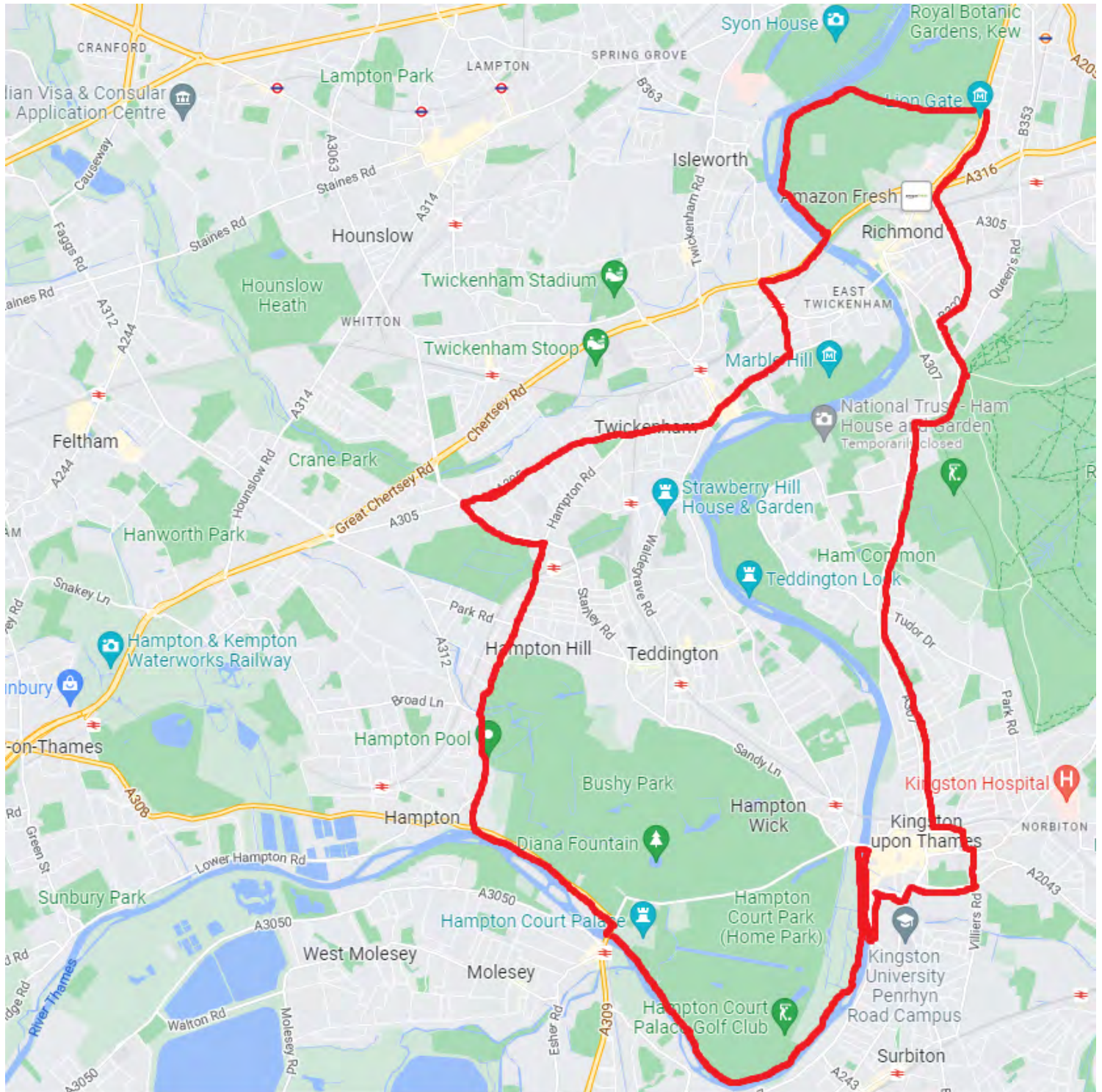


@RCVS_Richmond

Police introduce Dispersal Order

A Section 35 dispersal has been authorised by Insp Mcloughlin beginning 16:00 on 04/11/22 until 07:00 06/11/22.

This is due to many young people coming to the borough in previous weeks and in some cases causing ASB and other crimes.



**METROPOLITAN
POLICE**

Council announces Cost of Living Fund to support organisations keeping residents warm and fed this winter

Richmond Council is encouraging local voluntary sector groups to apply to the Cost of Living Fund, which provides grants to organisations delivering services to help residents keep warm and fed this winter.

Through the Cost of Living Fund, Richmond Council is providing £150K of grants to voluntary sector organisations working to meet the immediate needs of those in Richmond upon Thames who are struggling most during the crisis.

Cllr Gareth Roberts, Leader of the Council, said: *“The reality of the cost of living crisis is here, and we are committed to ensuring people are able to eat well and stay warm this winter. I strongly encourage any voluntary sector group who is looking to assist residents to apply to the Cost of Living Fund.”*



“By working with our partners, the Council has already offered a huge amount of support to residents but more needs to be done. There are many organisations across our borough who already work hard to support their communities. It is therefore a priority for the Council to offer them the support they need to develop plans that will help our residents and businesses weather the storm.”

The Council aims to extend its offering of warm spaces beyond the borough’s libraries. Warm spaces are intended to provide residents with accessible places to go to keep warm, whilst also offering a range of additional facilities or activities, such as toilets, refreshments, free Wi-Fi and charging points. Successful grant applicants will be required to sign up to the Council’s Warm Spaces Charter and will have their warm space listed on the Council’s planned warm space directory.

Organisations planning to support residents in or at risk of food poverty are also encouraged to apply for a grant. Richmond is currently covered by four foodbank outlets as well as several initiatives that offer food surplus, however rising food prices have increased local need.

Cllr Roberts added: *“If your organisation can provide services to help the most vulnerable in our borough to stay warm and fed this winter, and needs additional funding to do so, please apply. And for residents, please ensure you sign-up to our cost of living e-newsletter to keep up to date with new projects and initiatives.”*

The Fund is part of Richmond Council’s £3 million allocation to finance urgent support packages which will help residents struggling as a result of the cost of living crisis, and part of its work with the voluntary sector to provide support where it is needed most.

Organisations will be able to apply for grants between £5k and £10k to support with items that are linked to the grant priorities. The deadline for applications is **midnight on 21 November 2022**.

Find further details on [how to apply for funding](#) as well as the application form.

For organisations requesting less than £5,000 the [Civic Pride Fund](#) is open for applications on a rolling basis. If you are an individual in need of support, or to learn more about how the Council is supporting residents, visit the [Cost of Living Hub](#) or [sign up to the cost of living e-newsletter](#).

SAKE SENSATIONS - SENSATIONAL!

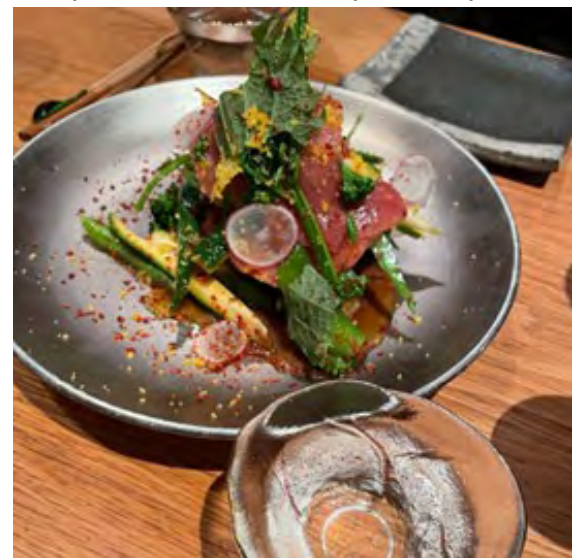
I've long been a great fan of sake, and was pleased to learn that sake rice wine has been taking centre stage in a host of London restaurants and bars recently in celebration of its food-pairing versatility. Carefully selected chefs have created seafood-based dishes as part of a **Sake Seafood Sensations** campaign to showcase the compatibility of various Sake styles with different global cuisines, as well, of course, as Japanese. Knowing that sake is a particularly good match for seafood (thanks to its high umami factor and low levels of iron and acidity) I thought it a good idea to check out one of the restaurants taking part in the campaign, created by JFOODO (the organisation responsible for promoting Japanese food and drink products globally).

So, knowing that my husband isn't keen on raw fish, our daughter jumped at the chance to accompany me to **Engawa**, a pocket-sized Japanese restaurant in Ham Yard, just off Shaftesbury Avenue. The restaurant has prepared a special menu for the Sake Seafood Sensations campaign and all I can say is 'Wow!'. We started with Salmon Tartare with Truffle & Parmigiano cheese shavings. This was paired with **Kikuisami 36 Samurai**. It arrived in the most beautiful bowl, where this delicate little mountain of flavour nestled in the bottom. The Sake paired absolutely perfectly with it and it was interesting to note that this sake had savoury, slightly mushroomy, notes in the mouth. The finely shredded cabbage underneath the salmon gave additional texture and crunch, and almost tasted as though it were fresh crab meat - fascinating!



Our second course was Seabass Carpaccio salad with Parmigiano cheese shavings & 25 Japanese lime sauce. This was paired with **Tosazuru "Azure"**. The Sake sommelier told us that this wonderful sake was made from deep sea water off the coast of Japan (as opposed to the mountain water usually used). The salad was also delicious and the grapefruit element of the dish particularly refreshing after the richness of the first course. This second sake paired beautifully and tasted slightly fruity, compared with the earthy, savoury notes of its predecessor. Interestingly I'd kept back a taste of the first sake to try with the second course...reader, it just didn't work at all, and tasted quite wrong.

By this time we were both feeling pretty replete, so opted to share the final course (but, naturally, enjoy a sake each to pair with it!). O-Toro sashimi with Jalapeno soy sauce 35 (Fatty tuna served with spicy sauce) was paired with Kubota Manju. Our sommelier explained that the **Kubota Manju** is excellent with steak as well, but it matched the tuna like a dream. The tuna melted in your mouth and paired sublimely with the fruity notes of this sake. It was a perfect pairing and we were both in Sake bliss!



Sake is such an underrated drink here in the UK. Its versatility and diverse flavour profiles deserve to be discovered more by the Brits. I'm jolly glad that organisations such as JFOODO are taking the initiative: long may it last, and I can't wait for the next instalment. In the meantime, don't be scared to try sake - in the past I'd always had it served warm, but the sommelier at Engawa explained that he felt it much better to serve at room temperature or chilled, as it showcases the flavours best - and I think he's spot on!

The Sake & Seafood Pairing menu at Engawa is available till 30 November. Other restaurants taking part in the Sake Seafood Sensations Campaign are [here](#)

TOMATO HEAVEN (FROM YOUR OWN GARDEN!)

I've been in 'tomato heaven' this year and I'm going to share my secret with you. Like most people I know, I was pretty upset last year when my lovingly nurtured row of flourishing tomato plants suddenly developed blight and died. I know in the great scheme of things it's a minor problem, but nonetheless it was extremely frustrating. So this year I decided to investigate ways of protecting my tomato harvest - and I'm so glad I discovered [Burpee Europe](#). Blight resistant varieties are invaluable with our unpredictable British summers, and **Burpee Europe** expanded its range recently. I've tried quite a few varieties this summer and been so impressed with the yield (as have half my road too, as I shared the seedlings with neighbours!)

Which? Gardening did some blight-resistant tomato trials in 2018 and as a result, they recommended three Burpees varieties in the Best Buys last May: **Crimson Crush, Burlesque and Veranda Red**

Crimson Crush was recommended as a salad tomato with excellent flavour and garden performance. The other ones I grew were **Rose Crush**; this was superb with its delicate pink colour and outstanding flavour balance of sweetness, umami and acidity. It produced a good yield of medium-large, beefsteak style fruit. **Cocktail Crush** was another sterling tomato - smaller-fruited and slightly sweeter than Crimson Crush - it had a tangy finish when eaten. Burpees refers to it as the blight-resistant 'Ailsa Craig' salad tomato with a consistently good flavour. Another real star was **Nagina** - with red, plum type fruit. It was really useful for cooking too, as the flavour was so good. To be honest I haven't needed to open a can of tomatoes for months!



The only slight disappointment for us was Veranda Red - it had a very small, but tasty, yield, but that could have been down to a number of factors such as positioning, timing of the germination etc.

I'm now down to my last few bowls of my 2022 harvest and I'm really going to miss being able to enjoy home-grown tomatoes for breakfast, lunch, snacks and dinner! I've also made some 30 jars of green tomato chow chow.

To celebrate my truly amazing tomato harvest, I felt I deserved a trophy (especially after having fed and watered my crop all summer). The [STAUB ceramic tomato cocotte](#) is perfect for displaying my tomato salads but I can also cook in it and serve straight to the table. These beautiful ceramic cocottes are suitable for use in the oven, microwave and dishwasher, storing heat exceptionally well before releasing it evenly to the food inside. STAUB's tomato-shaped Cocottes are available in two sizes - a 16cm Tomato Ceramic Cocotte, priced £24.95, and a 25cm cast iron version at £249... I'll work my way up to that next year perhaps!



The Addams Family Musical

by Marshall Brickman and Rick Elice

BROS Theatre Company at Richmond Theatre

Could a musical really recreate the iconic and morbidly enticing Addams of the sixties TV show?! A delightful glimpse of Thing, barehanded obviously, opened a fabulous tableau of the glamorous, kitsch, macabre family behind a gauze on a sweeping candlelit staircase, surrounded in gothic splendour. *When You're an Addams* introduced to the whole undead cast, clad head-to-toe with atmospheric detail and intricate make-up. The rule that one should never begin with a showstopper was disproved ... you can do exactly that.



The Halloween production of *The Addams Family Musical*, directed and choreographed in great detail by Sian Bowles-Bevan, had many more entrancing sequences and numbers brought to life by Musical director Chiara Beebe.

The matriarch, Morticia, monumentally played by Heather Stockwell, dripped sensuality. Gomez, a vibrant Guillaume Borkhataria, was consistently full of charm, enhancing the erotic chemistry between the bizarrely handsome couple. Uncle Fester was loveable and optimistic, breathing life into unlit bulbs whilst playing the ukulele. Faithful butler Lurch, played by Bill Baker, really came to life (so to speak!) in the second half, delightfully shocking everyone by succumbing to the morbid charms of grandma (madly played by Clair Jardella).

A great torture number had Pugsley (Mathew Madeley) and Wednesday (Katy Jackson) singing *Pulled*. Wednesday had become a determined young woman, and Lucas, her clean-cut potential suitor, played with conviction by Griffin Godsick, wouldn't look out of place in *Book of Mormon*.

As soon as his wholesome parents came to the Addam's for dinner, the fun really started. Played smoothly by Russell Bramley, the ruthless businessman father, and his poetry-reciting spouse Alice, played by Tracy Sorgiovanni, energised this sub-plot. The highest point is when they finally shed their inhibitions, and rediscovered each other.

A joy of a show.



Read Heather Moulson's review at www.markaspen.com/2022/10/31/addams-fam

Photography by Joe Stockwell

A Dead Body in Taos

by David Farr

Fuel at Wilton's Musical Hall, Whitechapel until 12th November, then on tour until 19th November

Theatre, films, television and books have all dealt endlessly with the fascinating subject matter of what happens when we die and how those we leave behind cope ... but what happens when technology steps in and it appears that dying isn't quite what it seems?



Writer David Farr brings his wealth of experience to this difficult subject in a treat of a play that is not always comfortable to watch, but is in turn equally moving, funny and disturbing.



A Dead Body in Taos focuses on Sam who finds herself in Taos, a small town in New Mexico. She is there to bury her estranged mother, wind up the estate and return to her life in London. But things take a decidedly different turn when she discovers her mother Kath's involvement in a local scientific research project. Through a series of flashbacks, we discover more about the rebellious free-spirited Kath and her marriage to Sam's father, including a truly heart wrenching *Sliding Doors* moment.

The compelling narrative portrays the raw emotions experienced in our human existence and imagines how future technology could offer a less engaged experience in which to reflect upon ourselves, connect with loved ones and live on virtually.

The use of abstract artist Agnes Martin's connection with Taos is a neat device to illustrate the lens through which Kath sees the world and the world sees her, though imaginative multimedia projections and music.

Director Rachel Bagshaw has assembled a top notch, versatile cast, but the night belongs to Eve Ponsonby as Kath. Her fiery and impassioned performance is captivating. We may not always like Kath but somehow we are always rooting for her.

The biggest mystery of life is what happens after it ends. This play takes that difficult subject and makes us think and makes us laugh. And that is a winning combination.



Read Eleanor Marsh's review at www.markaspen.com/2022/10/28/dead-body-taos

Photography by Helen Murray

OPEN AUDITIONS at the MARY WALLACE THEATRE

Alert for all Terry Pratchett fans! Open Auditions for TERRY PRATCHETT's WYRD SISTERS - THE PLAY will be held at the Mary Wallace Theatre on Monday, November 14th at 7.45pm. Auditions for this foray into the strange and fantastical experience that is Discworld are open to all - that is, you do not have to be a member of the Richmond Shakespeare Society to read for a part! And if you want a sneak preview of the play please do join us at a Reading on Monday, November 7th at 7.45pm. You will be warmly welcomed and, almost certainly, recruited.



The Mary Wallace Theatre is on Twickenham's Embankment, between St. Mary's Church and the Barmy Arms.



Details of Richmond Art Society's Winter Exhibition announced

The Richmond Art Society will be holding its Winter Exhibition at the Landmark Arts Centre on Friday 2 and Saturday 3 December 2022.

A wide range of art will be on display and for sale, from paintings, drawings and prints to sculpture and photography.

The exhibition is open from 10am to 5pm on Friday 2 and Saturday 3 December, with a special opening night event from 6 to 8pm on Thursday 1 December.

To book your tickets and for information visit [Landmark Arts Centre website](http://www.landmarkartscentre.com).



TRAVELLER'S TALES 134

RETURN TO FRANCE PART 3



Doug Goodman enjoys the final week of a holiday in Normandy

After leaving Calais from the DFDS ferry from Dover many miles had been covered in Northern France and Normandy. Overnight stops in St. Omer and on the Normandy Coast now gave way to a week's relaxation at an old farmhouse south of Le Havre. The farmhouse du Mont was situated in a field amongst the orchards of 50 acres of the imposing Chateau du Mont. About ten miles from Honfleur and between the village of St. Maclou and the town of Beuzeville, it was ideally placed for excursions in the region and the perfect spot to spend time drinking local wine, Calvados and Camembert. With five bedrooms, four bathrooms, a spacious lounge, kitchen and dining area the house could accommodate ten people in comfort. Probably built around the same time as the chateau in 1642 it could use a little renovation but for the four of us it provided a place to unwind. We met our hosts Jen and John the caretakers of the estate and had a tour of the 17th century chateau. In 1726 the building was extended to its present size: in the 1990s the gardens were restored by Italian owners who built fountains and erected statues. During WW2 it was used as a regional HQ by the Gestapo. Rooms consist of lounges, a library, ten bedrooms, kitchen, dining room and in the grounds a large pool, games building with accommodation and a cottage. The rooms have wooden and marble floors, wood panelling and sparkling chandeliers. A concierge service is available and some guests take their own chef. If you fancy a very large family holiday there's space in the whole estate for 33 people.



Holiday Farmhouse



Chateau du Mont



Chateau du Mont

Market day in Beuzeville is on Mondays. In the town we dined at the restaurant Cochon d'Or and in St Maclou at La Cremaillere. Both provided excellent, good-value meals but we found that the price of wine in restaurants is now close to UK restaurant prices. However, buying wine and beer in the local Intermarche was amazingly cheap.

BEAUTIFUL GARDEN

A 60 mile drive south on the auto- route took us to the world-famous, flower-decked village of Giverny. A visit to the Museum of Impressionism was the first stop on our two day's exploration of Monet's home, garden and paintings. Crowds lined the street awaiting entrance to Monet's 'garden but taking advice from friends, we had pre-booked for a 09.30 entry the following morning. Despite arriving as the gates opened there were coach-loads of visitors jostling in the queue. People would get in the way of my camera but it was possible to find quiet spots by the lake and imagine the inspiration that Monet got from the vistas of water, colours and light. In the house, where he lived from 1886 to 1926, his studio exhibits copies of his most famous works. The yellow breakfast room was beautiful and the museum shop had a wide range of souvenirs. Tips: book in advance especially in summer and stay in one of the small, local hotels or in Vernon across the River Seine. While Giverny is packed in the day time it was completely deserted in the evening in mid-September to the extent that there was nowhere to have dinner.



Monet's Garden at Giverny



Lake at Giverny



Monet's Studio

HISTORIC CITY

After a night at the quirky Hotel Le Coin des Artistes, once a bar frequented by Monet and fellow artists, we headed north for Rouen. Arriving from the south the first impression is of wide-spread industrial development but on crossing The Seine a very different view emerges. The soaring towers and spires of the medieval cathedral dominate the city and beckon you towards them. The Hotel Mercure Rouen Centre was situated almost adjacent to the cathedral but to find it would have been impossible without very detailed instructions from the hotel. Bollards had to be negotiated using a code and I was delighted to see a police car failing to gain entry. The hotel has an underground car park with a very narrow entrance. The room was very comfortable with extremely helpful staff. The nearby Museum of Fine Art had about six paintings by Monet as well as works by many other Impressionists. The city at night with its typical half-timbered houses and narrow streets looked dramatic. The Cathedral of Notre Dame dates from 1145 and was once the world's tallest building. It contains the tombs of Dukes and Kings and includes the tomb of King Richard 1st of England – The Lion Heart. The cathedral attracted artists throughout the centuries. Monet painted it on 30 occasions. Leaving Normandy after seeing so many historic sites we once again took the almost empty toll roads towards Calais and home.



Rouen Cathedral by Monet



Rouen Cathedral



Rouen at Night

More information

Farmhouse and Chateau du Mont www.rentals@chateaudumont-normandy.com Prices in high season: farmhouse for a week €2750.00; low season €1800. Chateau in high season €11,500 and in low season €6750. Both properties for a week for up to 33 guests cost €14,500 in high season and €8550 in low season. The property is featured in the brochure of Oliver's Travels. www.oliverstravels.com. Local restaurants: La Cremaillerie www.la-cremaillerie.fr. Hotel and restaurant Le Cochon D'Or www.le-cochon-dor.fr. Monet's Garden at Giverny www.giverny.org/gardens. Museum www.fondation-monet.com/en/giverny. Hotel Le Coin des Artistes. www.le-coin-des-artistes-bed-breakfast.co.uk Rouen. www.en-normandie-tourisme.fr/unmissable-sites/rouen. Hotel Mercure Rouen. www.mercurerouencentre.com DFDS www.dfds.com

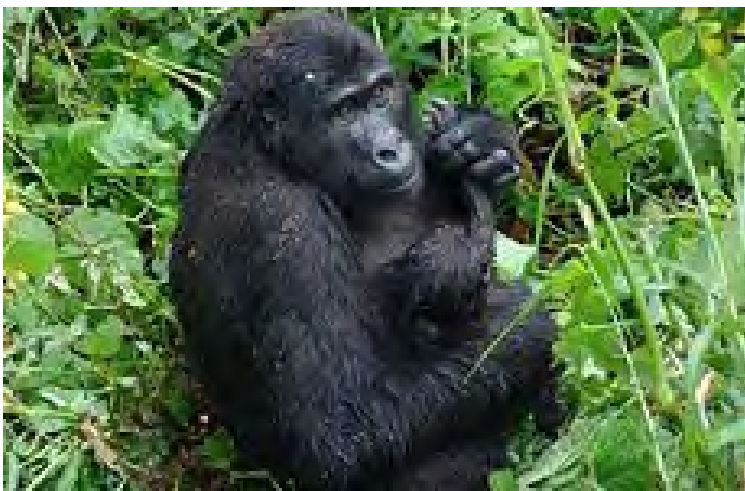
WIZ Tales: Uganda - Ebola Outbreak

It has been reported that an Ebola outbreak, declared on 20 September 2022 in Uganda, has spread from Mubende to nearby districts and on to the capital, Kampala. Surrounding countries, the Democratic Republic of Congo, Sudan, Kenya, Tanzania, Rwanda and Burundi are on the alert.

The virus originates from wildlife including fruit bats. The Ebola virus spreads between humans by bodily fluids and can be transferred via contaminated areas or items. The fatality rate is high.

An Incident Management System is in place in Uganda but there are no licensed vaccines or therapeutics for Ebola caused by the Sudan strain of the virus (SUDV).

Similarly, to the Covid in the UK in the earlier stages of the pandemic, contact tracing and isolation are in operation, and once again adequate Personal Protective Equipment is not available. Social distancing and personal hygiene are advised.



Photographs from Uganda:

<https://worldinfozone.com/gallery.php?country=Uganda>



St Mary's University

St Mary's Announces Collaboration with Professional Football Scouts Association

Students on the Chelsea Coaching and Development Programme at St Mary's University, Twickenham have been given the opportunity to complete industry qualifications through a partnership with the Professional Football Scouts Association (PFSA).

The PFSA offer a range of football courses in the areas of Performance Analysis, Data Analysis, Talent ID and Scouting which allows participants to network with industry-leading practitioners.

great to partner with an established industry organisation which provides a wide range of education and links to applied practice. Embedding these qualifications within my modules has provided our students with the opportunity to undertake additional professional development to help support them on placement, with skill development and enhance their employability upon graduation. We recognise as a programme that being able to offer additional experiences to our students is vital in their development with us”

Course Lead for the programme, Tom Howard was also delighted, adding, “It is fantastic that our students will now benefit from industry recognised performance analysis and scouting courses provided by the PFSA. One of the key principles of our delivery is for our students to learn valuable and employable skills alongside their education. A huge thank you to Patrick for designing his modules with this in mind and we very much look

forward to the development of Chelsea students in the field of PA”

For more information about the programme [please visit the course website.](#)



St Mary's
University
Twickenham
London

Through this collaboration, students have undertaken their Level 1 in Performance Analysis within specific modules on their FdSc and BSc Chelsea Coaching and Development Course.

At the forefront of this is Senior Lecturer in Performance Analysis, Patrick Oxenham, who said of the partnership, “It has been



St Mary's
University
Twickenham
London

Young Writers Festival 2022

Arts Richmond is delighted to announce our Young Writers Festival for 2022! The competition is open to all young people who either live or attend school/clubs in the London Borough of Richmond Upon Thames.

Entry rules are simple - you may write about any subject of your choice, in any format. You could write a story, descriptive writing, a poem, a script, anything you write yourself - as long as it is under 500 words (or 25 lines for a poem), whatever the imagination can devise.

Entries close on Friday 2nd December. Our competition rules and entry template can be downloaded below. If you have any questions, email ywentries@artsrichmond.org.uk

Entries are judged in four age groups with prizes for all winning entries. In addition, Arts Richmond appoints a Junior and Senior Laureate who will be given opportunities during the following year to write about events taking place in the borough, for possible publication.

All shortlisted entrants will be invited to a gala awards event to be held in a prestigious venue in Spring 2023.

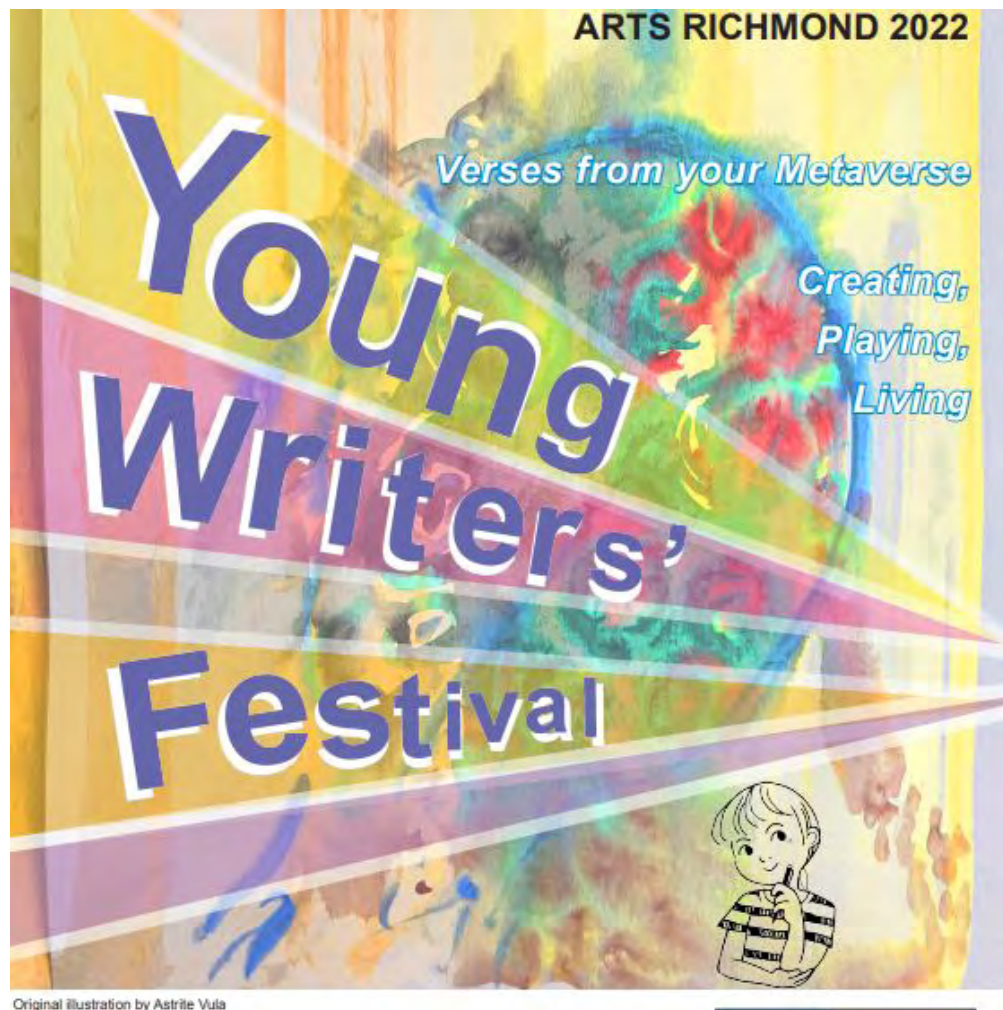
ENTRIES MUST BE IN TYPED FORMAT (hand written entries will be disqualified)

Extracts from longer pieces will be accepted. All entries must be exclusively the entrant's own work.

All shortlisted entries will be printed in a booklet which will be available for sale at the event.

Please send your entries to ywentries@artsrichmond.org.uk

Young Writers Entry Rules (docx) [Download](#)
Young Writers Entry Template 2022 (pdf) [Download](#)



COFFEE BEANS MEANS TREES

Two SW London pubs help turn one million cups of coffee into a million trees

When local pub company, the multi-award winning [Oakman Group](#), owner of [Beech House, Hampton Hill](#) and [The White Swan, Riverside, Twickenham](#) (see list below), was founded almost 15 years ago, its Founder and Chairman Peter Borg-Neal declared the business would leave things a little better than before - for their neighbours, guests, employees, the local communities they serve, and the wider environment.

As the company continues to grow, this guiding principle continues to be the foundation of its business. One outcome of that policy was celebrated on **Friday, 28th October**, when Peter planted an Oak Tree (*Quercus Palustris*), along with help from team supervisor, Marisa Blackman, and Oakman's Gardens and Sustainability Manager, Philip Jones, in the company's recently opened 1.2 acre [Oakman Kitchen Garden](#) at **The Akeman Inn** near Bicester to celebrate the company's achievement of planting over one million trees. The first 1,400 of those trees, one for every Oakman employee, were planted in September 2021, marking the start of their mission to plant a million trees a year.

Since then, through a collaboration with [tree-nation](#), every cup of coffee sold across the group's pubs and hotels has resulted in planting a tree, helping to offset some of the daily carbon emissions produced by the business and its stakeholders.



Oakman Gp Chair Peter Borg-Neal, Marisa Blackman and Oakman's Gardens & Sustainability Manager Philip Jones plant commemorative Oak in the company's Kitchen Garden at The Akeman Inn, Kingswood - credit Oakman Group

Tree-nation is a not-for-profit organisation that helps support local communities, create jobs, and protect biodiversity through reforestation and conservation projects worldwide. Oakman's Cup of Coffee campaign helps their tree-planting projects in Madagascar and Tanzania flourish.

Eighty per cent of the trees are in Madagascar's Eden project, with the other 20% planted in Tanzania in the Usambara Biodiversity Conservation project. That is almost 450 hectares of reforested land, representing some 50,000 tonnes of recaptured Co2 - all from selling around 2,500 cups of coffee per day across Oakman's estate.

Chairman Peter Borg-Neal said: "Planting this young Oak, which might live for 1,000 years, is a simple commemoration of what small groups can do with little effort or personal impact, but which can have profound effects. For example, we were the first pub group to ban plastic straws, eventually leading to their national disappearance. We were the first pub group to install electric charging points in our new pub car parks. We always seek ways to make a difference without losing sight of our commercial responsibilities.

"We couldn't have achieved our first year's target without the support of our guests. To say thank you, on Friday morning before planting the Oak tree, all customers ordering a cup of coffee at any of our 40 pubs were given them on the house."

Maxime Renaudin, the Founder & CEO of tree-nation, said: "A year ago, our sponsor, Oakman Group, committed to planting one tree with us for each coffee sold. One year later, they've reached the incredible milestone of one million trees! Congratulations to everyone at Oakman as well as all their customers who are changing the world, one coffee at a time."

Match Preview: Forest

All you need to know ahead of Brentford's Premier League meeting with Nottingham Forest

Written by Brentford Football Club



Analysis, team news, officials and statistics. Here's everything you need to know ahead of Brentford's Premier League game against Nottingham Forest.

Brentford head to the banks of the River Trent on Saturday for our penultimate league fixture before the World Cup break.

Our hosts currently prop up the table but have picked up in recent weeks, taking five points from their last five matches, while we can move back into the top half with a victory.

Here's all the build-up to our trip to the City Ground.

The Opposition: Nottingham Forest

Nottingham Forest were the story of the summer in the Premier League, breaking the top flight record for most signings in a single window.

22 players came through the door at the City Ground as Forest prepared for their first season in the Premier League since 1999.

Ten of those players arrived after the season began so, perhaps unsurprisingly, it has taken a while for Steve Cooper to get fully to grips with the squad at his disposal.

Forest used a League-high 24 different players in the first eight weeks of the season, collecting four points in the process.

However, since then Cooper has been able to get some stability into his selection and the results have picked up.

Eight players have started at least four of Forest's last five Premier League games, a run which has seen them pick up five points, including all three against Liverpool on their last outing at the City Ground.

Discounting the second half last weekend at league leaders Arsenal, where the Gunners scored four, Forest have conceded just three goals in their last nine halves of football.

Cooper's side have also benefited massively from the backing of the home fans at the City Ground. All but one of Forest's nine points have come on the banks of the Trent, as have seven of their eight league goals. The Red have also conceded nine goals in six games at home, compared to 19 in seven away.

Summer arrival from Union Berlin, Taiwo Awoniyi, scored the winner against Liverpool a fortnight ago, his third of the season, leaving him one clear of Brennan Johnson at the top of Forest's scoring charts. Fellow summer arrivals Lewis O'Brien, Emmanuel Dennis and Cheikhou Koyate account for Forest's other Premier League goals this term.

At the other end, on-loan Manchester United goalkeeper Dean Henderson has made the

second-most saves in the Premier League this campaign (53), having faced the second-most shots (212).

The Gameplan: With Nottinghamshire Live's Sarah Clapson

Sarah Clapson of Nottinghamshire Live gave us the latest on Steve Cooper's side in Hot off the Press: "In the last few games, he has gone with a 4-3-3 and they have looked more solid as a result. They started the season playing as they did last season, with three at the back and wing-backs, but they were far too open, so that is the big chance he has made. They do pack the midfield as well now; they can play five in the middle, bring the two forwards back and play one up front at times if they are really under the cosh."

Team News: Thomas Frank's pre-match press conference

Ivan Toney serves a one-game suspension for five bookings while Pontus Jansson (hamstring), Thomas Strakosha, Aaron Hickey (both ankle) and Charlie Goode (knee) are all sidelined.

Christian Nørgaard will be a late decision to see whether he will be involved for the first time since August.

Nottingham Forest suffered a blow in training this week with defender Giulian Biancone picking up a knee injury that will rule him out for the rest of the season. The full-back joins Harry Toffolo, Moussa Niakhate (both hamstring), and Omar Richards (leg) on the absentee list while Jack Colback hasn't featured since September due to a back issue.

The Boss: Steve Cooper

Steve Cooper took over at Nottingham Forest in September last year with the Reds bottom of the Sky Bet Championship table.

Fast forward eight months and Cooper was at Wembley lifting the Play-Off trophy and ending Forest's 23-year-wait for a return to the Premier League.

That promotion only served to cement Cooper's reputation as a coach. Pontypridd-born, Cooper spent four years playing in Wales before retiring at 23 to become Wrexham's head of youth.

A UEFA Pro Licence holder at 26, Cooper moved to Liverpool in 2008 and became academy manager in 2011. During his time at Melwood he worked with the likes of Raheem Sterling and Trent Alexander-Arnold.

He moved to the FA in 2013 as a youth coach educator and coached the England Under-16s in 2014, before making the step up to under-17 level the following year.

He led the Young Lions to the final of the 2017 European Championship, where they lost to Spain on penalties, but they gained revenge later in the year by coming from 2-0 down to beat the same opponents 5-2 in the World Cup final.

With Graeme Potter heading to Brighton in the summer of 2019, Cooper was handed his first club managerial role after six years with the FA, guiding Swansea City to sixth and fourth in his two seasons, losing out to Brentford in the Play-Offs on both occasions.



England team announcement: England v Argentina



The England team for this weekend's Test match against Argentina has been named.

Eddie Jones' side will take on Los Pumas at Twickenham Stadium in their opening Autumn Nations Series game on Sunday 6 November (2.15pm KO).

Owen Farrell will captain the side at inside centre. Manu Tuilagi returns at outside centre, Marcus Smith is at fly half and Ben Youngs is scrum half. Vice-captain Jack Nowell is on the right wing, Joe Cokanasiga is on the left wing and Freddie Steward is full back.

There is an England debut for Alex Coles at lock, with Jonny Hill alongside. Vice-captain Ellis Genge (loose-head prop) and Kyle Sinckler (tight-head prop) join hooker Luke Cowan-Dickie in the front row. Maro Itoje and Tom Curry are named as flankers and Billy Vunipola is No. 8.

David Ribbans is also in line to make his England debut after being named as a finisher, alongside Jack Singleton who could make his first England appearance since 2019.

Mako Vunipola, Joe Heyes, Sam Simmonds, Jack Willis, Jack van Poortvliet and Henry Slade complete the 23.

Eddie Jones said: *"It's been a really good week of preparation and I've been very pleased with the squad's attitude. They've shown real work ethic and a determination to improve and our leaders, Owen, Ellis and Jack have really lifted the team. We're looking forward to a great game of rugby at a full Twickenham Stadium against a very good Argentina side. It's been a tough time for rugby lately and we hope that these autumn games show just what a special game it is."*

Very limited tickets are still available via www.EnglandRugby.com/Tickets. The match is also live on Amazon Prime Sport and TalkSport.

ENGLAND XV

15. Freddie Steward (Leicester Tigers, 13 caps)
14. Jack Nowell (VC) (Exeter Chiefs, 42 caps)
13. Manu Tuilagi (Sale Sharks, 46 caps)
12. Owen Farrell (C) (Saracens, 97 caps)
11. Joe Cokanasiga (Bath Rugby, 12 caps)
10. Marcus Smith (Harlequins, 13 caps)
9. Ben Youngs (Leicester Tigers, 117 caps)

1. Ellis Genge (VC) (Bristol Bears, 39 caps)
2. Luke Cowan-Dickie (Exeter Chiefs, 37 caps)
3. Kyle Sinckler (Bristol Bears, 52 caps)
4. Alex Coles (Northampton Saints, uncapped)
5. Jonny Hill (Sale Sharks, 15 caps)
6. Maro Itoje (Saracens, 58 caps)
7. Tom Curry (Sale Sharks, 41 caps)
8. Billy Vunipola (Saracens, 64 caps)

FINISHERS

16. Jack Singleton (Gloucester Rugby, 3 caps)
17. Mako Vunipola (Saracens, 70 caps)
18. Joe Heyes (Leicester Tigers, 5 caps)
19. David Ribbans (Northampton Saints, uncapped)

20. Sam Simmonds (Exeter Chiefs, 14 caps)
21. Jack Willis (unattached, 4 caps)
22. Jack van Poortvliet (Leicester Tigers, 3 caps)
23. Henry Slade (Exeter Chiefs, 48 caps)

Red Roses name matchday squad to play Canada in Rugby World Cup semi-final

Head coach Simon Middleton has named his matchday 23 to play Canada in this weekend's Rugby World Cup semi-final at Eden Park (Saturday 5 November, kick-off 4.30pm local time/3.30am UK time and live on ITV).



England's most capped player Sarah Hunter captains the side at number eight with centre Emily Scarratt vice-captain. Wing Claudia MacDonald returns on the left wing after missing the last two games due to injury. Abby Dow starts on the right wing.

Hannah Botterman comes into the starting XV at loose-head prop with Amy Cokayne (hooker) and Sarah Bern (tight-head prop) making up the front row. Fresh from her player-of-the-match performance in England's quarter-final win over Australia, Marlie Packer is at open-side flanker with Alex Matthews blind-side.

Zoe Aldcroft and Abbie Ward continue as lock pairing. Zoe Harrison and Tatyana Heard are again the 10-12 axis with Saracens' Leanne Infante at scrum half. Helena Rowland retains her place at full back.

The finishers for the Canada match are Lark Davies, Vickii Cornborough, Maud Muir, Rosie Galligan, Poppy Cleall, Lucy Packer, Holly Aitchison and Ellie Kildunne.

Middleton said: *"We are very much looking forward to returning to Eden Park for this weekend's semi-final. I was really pleased with our performance against Australia in what were tough conditions. The players produced a professional performance and deserve great credit. Continuity is an important factor in team selection and we have achieved that through training, the pool stages and the quarter-final. Having said that, if you see an opportunity to improve or create different pictures that you believe could benefit the team's performance, you have to be brave enough with your selections to make those calls. We have done that throughout the competition to date and that philosophy will not change. Canada are an opponent we know well with great pedigree and history in the women's game. We know they are a strong side. We respect all they might bring but are focussed on our own performance. Our objective was to leave this country as a better squad than we arrived and to do that we need to move our game on again this week. If we do that and produce the level of performance we are capable of then we are confident we will get the right result."*

England matchday squad to play Canada

15. Helena Rowland (Loughborough Lightning, 21 caps)
14. Abby Dow (Wasps, 29 caps)
13. Emily Scarratt (VC; Loughborough Lightning, 106 caps)
12. Tatyana Heard (Gloucester-Hartpury, 7 caps)
11. Claudia MacDonald (Exeter Chiefs, 22 caps)
10. Zoe Harrison (Saracens, 44 caps)
9. Leanne Infante (Saracens, 56 caps)

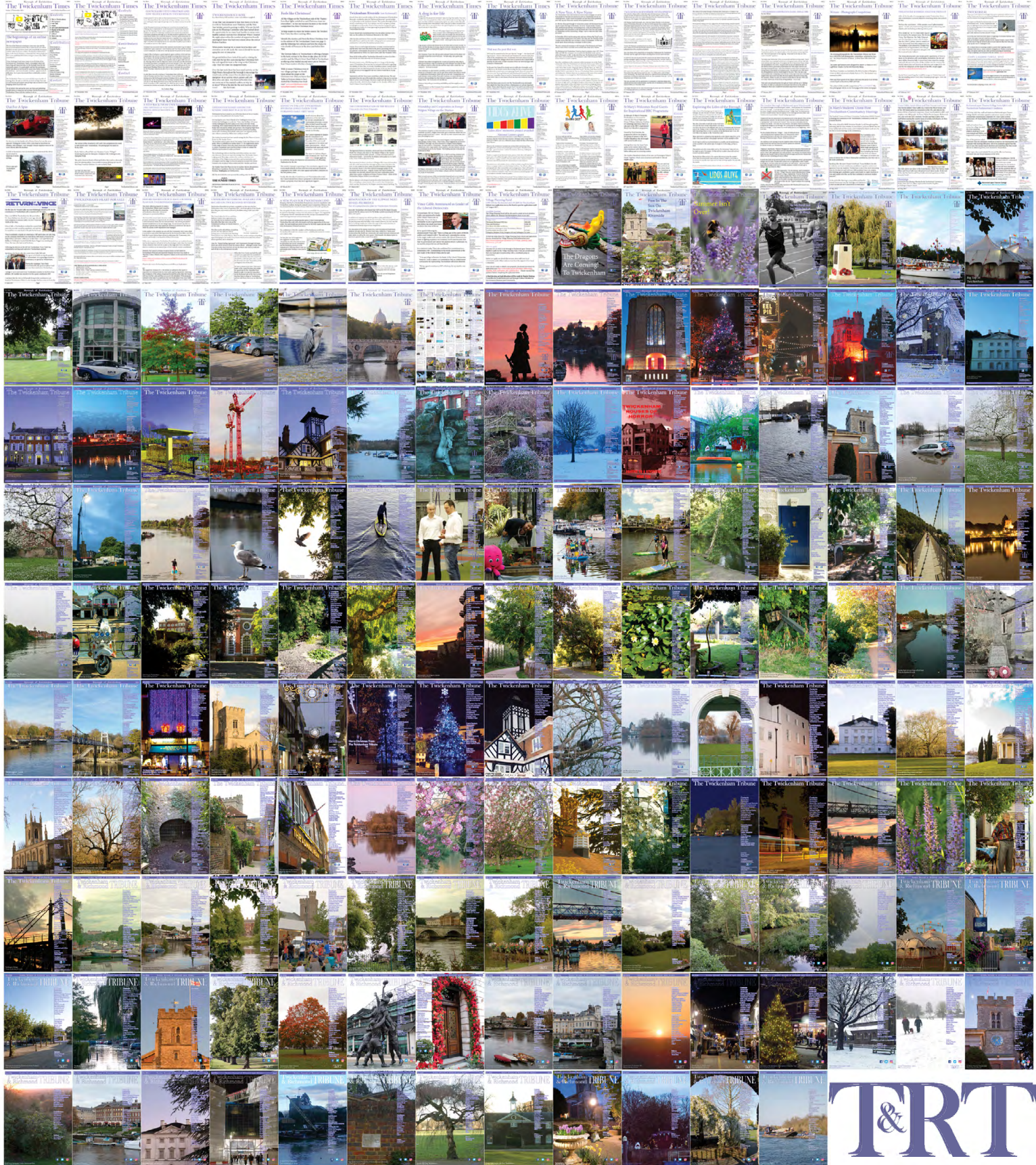
Finishers

16. Lark Davies (Bristol Bears, 42 caps)
17. Vickii Cornborough (Harlequins, 73 caps)
18. Maud Muir (Gloucester-Hartpury, 15 caps)
19. Rosie Galligan (Harlequins, 9 caps)

1. Hannah Botterman (Saracens, 34 caps)
2. Amy Cokayne (Harlequins, 68 caps)
3. Sarah Bern (Bristol Bears, 50 caps)
4. Zoe Aldcroft (Gloucester-Hartpury, 36 caps)
5. Abbie Ward (Bristol Bears, 59 caps)
6. Alex Matthews (Gloucester-Hartpury, 54 caps)
7. Marlie Packer (Saracens, 87 caps)
8. Sarah Hunter (C; Loughborough Lightning, 138 caps)

20. Poppy Cleall (Saracens, 61 caps)
21. Lucy Packer (Harlequins, 8 caps)
22. Holly Aitchison (Saracens, 13 caps)
23. Ellie Kildunne (Harlequins, 29 caps)

313 editions of the **Twickenham & Richmond Tribune** online - Lots to read: News, Reviews, History, Sports and On-going Sagas in the Borough of Richmond upon Thames



Half Page

Quarter Page
Landscape

Quarter Page Portrait

Eighth Page

Eighth Page
Landscape

Example advert sizes shown above

Thousands read The Twickenham & Richmond Tribune

If you are reading this you could be advertising your business with
The Twickenham & Richmond Tribune. Community rates are
available

Contact: advertise@TwickenhamTribune.com

View ad details at www.TwickenhamTribune.com/advertise

Contact

contact@TwickenhamTribune.com
letters@TwickenhamTribune.com
advertise@TwickenhamTribune.com



Published by:

Twickenham & Richmond Tribune (in association with World InfoZone Limited)

Registered in England & Wales

Reg No 10549345

The Twickenham Tribune is registered with the ICO under the Data Protection Act, Reg No ZA224725

©Twickenham & Richmond Tribune. All rights reserved. No part of this publication may be used or reproduced without the permission of Twickenham & Richmond Tribune. While we take reasonable efforts, this online newspaper cannot be held responsible for the accuracy or reliability of information. The views and opinions in these pages do not necessarily represent those of The Twickenham & Richmond Tribune.

[Terms & Conditions](#)